

Bretherton's

GOLD LINE HOLIDAYS
Experience the ultimate

2017



Exclusive door to door holidays by coach

HOLIDAYS JANUARY – DECEMBER 2017

DATE	DESTINATION	DAYS	PAGE
January 29th	London - The Shard	2	4
February 26th	Luxurious Mystery Tour	3	4
March 19th	Luxurious Mystery Tour	3	4
April 4th	Secrets of the Surrey Hills	5	5
April 18th	Central England & Bletchley Park	5	6
April 24th	Isle of Anglesey & Welsh Highland Railway	5	6
May 8th	Springtime in Lincolnshire	5	7
May 15th	Paignton & The English Riviera	5	7
May 22nd	Ireland - Glens of Antrim, Titanic Exhibition & Hillsborough Castle	5	8
June 6th	Northumberland & Alnwick Gardens	4	9
June 15th	Scotland - Isle of Arran	5	9
June 25th	Germany - The Mosel Valley	7	10
July 7th	Hampton Court Flower Show & Savill Garden	3	11
July 11th	North Norfolk Coast & Country	5	11
July 23rd	Shetland - Lerwick - Yell & Unst	6	12
August 4th	Luxurious Summer Mystery Tour	4	4
August 9th	Edinburgh Tattoo & Holyrood Palace	3	13
August 9th	Edinburgh City & Festival	3	13
August 14th	City of London - Buckingham Palace & Windsor	4	14
August 20th	Cheltenham & The Cotswolds	5	14
August 29th	Lake Garda & The Dolomites	10	15
September 10th	Isle of Wight - Sandown	7	16
September 21st	Southern Ireland - Killarney & The Ring of Kerry	7	17
October 2nd	Cornwall & The Eden Project	5	18
October 12th	Germany - Boppard Rhine Ablaze	6	19
October 22nd	Scotland - Inverness Inclusive at the Palace	5	20
November 20th	Loch Lomond - Turkey & Tinsel Inclusive at the Winnock	5	21
November 29th	Thursford Christmas Spectacular	4	22
November 30th	Durham Christmas Market	4	23
December 17th	London - Oxford Street Lights & Shopping	2	23
December 30th	New Year Celebrations at Shrigley Hall	4	24

A door to door service is offered throughout Lancashire on all our holidays

Please note: please keep in touch with our website and office for further tours, Christmas, Twixmas and New Year which will be offered later at short notice

COACH SEATING PLAN

13A	12A	11A	10A	9A	8A	7A	6A	5A	4A	3A	2A	1A	ENTRANCE DOOR
13B	12B	11B	10B	9B	8B	7B	6B	5B	4B	3B	2B	1B	
13C	Row 12	Row 11	Row 10	Row 9	Row 8	Row 7	Row 6	Row 5	Row 4	Row 3	Row 2	Row 1	
13D	12C	11C	10C	9C	8C	TOILET & STAIRS		5C	4C	3C	2C	1C	DRIVER
13E	12D	11D	10D	9D	8D			5D	4D	3D	2D	1D	

A Very Warm Welcome to you all

We are very pleased to welcome you to our 2017 brochure and would like to take this opportunity to thank our many loyal and regular customers and also welcome people travelling with us for the first time.

As always we have listened to what you, our valued customers want and we have taken time to compile this high-quality new brochure which includes British and European holidays. Once again we have endeavoured to provide you with good value whilst still maintaining the excellent quality that we are very well reputed for.

We provide an admirable personal service beginning with our free door to door pick-up (using only our own vehicles and drivers) which means that you don't have to wait for a taxi and can remain safe in the knowledge that you won't miss boarding the holiday coach. We have also designed our tours to eliminate the need for interchanges which can sometimes cause added stress and prolong your journey times. We believe that you should start your holiday the minute you are greeted by your driver!

As our motto states, we will always be dedicated to Quality, Courtesy and Care and we look forward to being of service to you in the near future.

Thank you from the management and staff of Brethertons

IMPORTANT PLEASE NOTE

PLEASE READ THE TERMS & CONDITIONS REGARDING YOUR HOLIDAY BOOKING

TO SECURE YOUR HOTEL ACCOMMODATION & SEAT ALLOCATION ON THE COACH DEPOSITS SHOULD BE SENT WITHIN ONE WEEK OF BOOKING, OTHERWISE YOUR BOOKING WILL BECOME VOID

An EEC Directive states that all monies paid by you must be secured in some way. To financially adhere to this we have set up an account with our bankers that complies with the regulation.

How to Pay?

We take payment by the following methods:-

Cash or Cheques - for holidays at Beacon Croft, Thornley with Wheatley, Longridge PR3 2NB (please make cheques payable to Brethertons Gold Line Holidays).

Debit Card - There is no charge for using Debit Cards.

Credit Card - Please note a charge of 2% will be added for using Credit Cards, we do not accept American Express cards.

Luggage Allowance for all Holidays

One medium sized suitcase (up to 20 x 26 inches) with a maximum weight of 15kg/33lbs. (please note drivers & hotel porters have the right to refuse to lift any overweight cases). A small holdall may also be taken onboard the coach.



Gift vouchers of any amount are available.
Please phone for details



It is easy to book-just phone our office direct, your personal enquiry will be dealt with efficiently, quickly & completed in minutes.

Telephone

01772 783795

Please note our office opening hours

Monday-Friday 9.00am until 5.00pm Saturday 9.00am until 12.30pm
Sunday Closed | Outside of these hours emergency cover only

DIRECT BOOKING TELEPHONE 01772 783795



London The Shard

2 DAYS • SUNDAY JANUARY 29TH – 30TH

Staying at the 4* Tower Bridge Hotel

Our Itinerary

DAY 1 Our first tour of the year takes us to London and the Shard.

Our morning departure south, with refreshment stops arrives in the Capital where a sightseeing tour of the City will be included. We then drive to our hotel which is superbly positioned overlooking Tower Bridge.

The rest of your time is free for you to relax, take the 5 minute stroll to the Tower of London or sample some of the nightlife.

DAY 2 After a relaxing full English breakfast we have an included visit to the Shard, a 95 storey glass Pyramid structure that stands 1016ft high, the tallest structure in the U.K. Here we are taken to the viewing galley which is situated on the 72nd floor and overlooks the city and the River Thames. Later we take a short stroll for our included lunch after which, you will have further free time before our late afternoon departure.



Facilities

- ✓ En-suite accommodation at the 4* Tower Bridge Hotel
- ✓ Hospitality tray
- ✓ Television
- ✓ Hairdryer
- ✓ WIFI
- ✓ The hotel has a lift

Holiday Includes

- ✓ Door to door service
- ✓ All coach travel and excursions as listed
- ✓ 1 night bed and full English breakfast at the 4* Tower Bridge Hotel
- ✓ Included London City tour
- ✓ Included visit to The Shard
- ✓ Included 2 course lunch on the second day
- ✓ Service of our experienced crew

Tour Price £179.00
Single Supplement £40.00



Luxurious Mystery Tours

3 DAYS • SUNDAY FEBRUARY 26TH – 28TH

3 DAYS • SUNDAY MARCH 19TH – 21ST

4 DAYS • FRIDAY AUGUST 4TH – 7TH

This year we include three of our most popular holidays, all staying at 4 star hotels.

Once again our luxurious mystery tours take us to 'whoknowswhere'. On each one your accommodation is ensuite with dinner and breakfast at a time that you personally choose.

As always on our mysteries, visits to places of interest will be made, we just don't tell you where.



Facilities

- ✓ En-suite accommodation
- ✓ Hospitality tray
- ✓ Television
- ✓ Hairdryer
- ✓ Please note that some rooms are accessed by steps

Holiday Includes

- ✓ Door to door service
- ✓ All coach travel and excursions as listed
- ✓ 2 Dinners - 3 course choice menu
- ✓ 2 Full Breakfasts
- ✓ (August tour) 3 Dinner
- ✓ 3 course choice menu
- ✓ 3 Breakfasts)
- ✓ Individual dining
- ✓ Mystery visits
- ✓ Service of our experienced crew

February
Tour Price **£189.00**
Single Supplement £45.00

March
Tour Price **£195.00**
Single Supplement £40.00

August
Tour Price **£315.00**
Single Supplement £70.00

**NEW
TOUR**



Secrets of the Surrey Hills

5 DAYS • TUESDAY APRIL 4TH - 8TH

Staying at the 4* Holiday Inn, Guildford

This is a totally new tour which we have devised, staying in Guildford amid the rolling hills of Surrey. Guildford is a small market town with architectural gems ranging from the Medieval Castle Keep, the Tudor Guildhall, Jacobean Abbots Hospital and Georgian Art Gallery. All that splendour is located alongside the River Wey and the most wooded county in England, Surrey. Throughout this spectacular holiday you will have the opportunity to explore some of Surrey's many secrets with our included visits as follows:

Our Itinerary

DAY 1 Morning departure with refreshment stops enroute to our hotel, the Holiday Inn at Guildford.

DAY 2 A full day tour to the Royal Horticultural Society's flagship garden and historic home at Wisley. You will have the opportunity to explore the 240 acres of established modern and traditional planted designs from the early spring Magnolias and fruit blossoms.

DAY 3 Today we visit Guildford town centre with an included visit to the Guild Hall which dates back to 1683. Here a local guide will introduce and talk us through the history of the Hall from its time as a courtroom to the now Council Chamber. Later we then visit the superbly kept Castle Gardens which can only be described as a 'gem' of colour. There will also be free time to discover the other attractions that Guildford has to offer.

DAY 4 A morning visit to the 'Spike' Heritage Centre formerly workhouse dating back to 1838 which gives an insight into the destitute classes of the Victorian era. We then visit Forest Lodge for included lunch and visit to Birdworld with over 2,000 animals, from birds and mammals of all sizes.

DAY 5 Our morning departure from our hotel takes us to Windsor for a leisurely visit before our return journey North.



Facilities

- ✓ En-suite accommodation
- ✓ Hospitality tray
- ✓ Television
- ✓ Hairdryer
- ✓ WIFI available
- ✓ The hotel does not have a lift

Holiday Includes

- ✓ Door to door service
- ✓ All coach travel and excursions as listed
- ✓ 4 nights ensuite accommodation at the 4* Holiday Inn, Guildford
- ✓ 4 dinners - 3 course choice menu
- ✓ 4 full English breakfasts
- ✓ Included visits to:
 - RHS Wisley
 - Guildford Guild Hall
 - Spike Heritage Centre
 - Forest Lodge Lunch
 - Birdworld
- ✓ Service of our experienced crew

Tour Price **£369.00**
Single Supplement £80.00
(Double/Twin for Sole Use)

DIRECT BOOKING TELEPHONE 01772 783795



Central England & Bletchley Park

5 DAYS • TUESDAY APRIL 18TH – 22ND

Staying at the 4* Daventry Court Hotel

Our mid-April tour takes us into central England and onto the 4 star Daventry Court Hotel.

Our Itinerary

DAY 1 We begin our holiday by driving south to Coventry where time will be given to visit the Cathedral, shopping centre or Motor Museum etc. before continuing to the 4 star Daventry Court Hotel for dinner and a stay of 4 nights.

DAYS 2,3 & 4 A special included visit to the world famous home of the British code breakers, Bletchley Park. Here you can discover its importance of technological excellence and role during World War two. It is now a flourishing Heritage Centre that celebrates the successes and values for those responsible in helping to shorten the war by as much as two years.

An included visit to Woburn Abbey and Gardens, the family seat of the Duke of Bedford. Here we take a tour of the house and gardens designed by Capability Brown. The drive to the Abbey takes us through some of the 300 acres of parkland which is home to 9 species of deer.

An included visit to Banbury, famous for its cross and the 'Fine Lady' who rode a white horse. The town is situated on the River Cherwell, a market town with pleasant shopping and cafes.

DAY 5 After breakfast we leave our hotel and drive through scenic countryside to Lemington Spa where time will be given to explore this Georgian Town, famous for its spa baths and parkland before starting our homeward journey.

Facilities

- ✓ En-suite accommodation
- ✓ Hospitality tray
- ✓ Television
- ✓ Hairdryer
- ✓ Swimming pool
- ✓ Porterage

Holiday Includes

- ✓ Door to door service
- ✓ All coach travel and excursions as listed
- ✓ Tea / Coffee on arrival
- ✓ 4 nights accommodation at the 4* Daventry Court Hotel
- ✓ 4 Dinners 3 choice menu
- ✓ 4 Full English breakfasts
- ✓ Included visit to Bletchley
- ✓ Included visit to Woburn Abbey and Gardens
- ✓ Services of our experienced crew

Tour Price £349.00
Single Supplement £72.00
Double/twin sole use



Isle of Anglesey & Welsh Highland Railway

5 DAYS • MONDAY APRIL 24TH – 28TH

Staying at the 3* Celtic Royal Hotel

Our holiday to Wales is situated in Caernarfon at the Celtic Royal Hotel overlooking the Menai Strait to Anglesey.

The town pleasantly situated on the river Seiont is famous for its castle where the investiture of the Prince of Wales takes place.

Our Itinerary

DAY 1 Our first day takes us through the Dee Valley to Betws-y-Coed then via the Llanberis Pass to our hotel for dinner and a stay of 4 nights.

DAYS 2,3,4 A full day tour of the Isle of Anglesey with a Welsh registered guide. We will learn the secrets and stories of hidden Anglesey.

A day tour of Alpine Snowdonia by coach and the Welsh Highland Railway between Port Maddock and Caernarfon, one of the most beautiful areas of Wales.

A full free day to do as you please, maybe visit the Castle, pedestrian shopping area or just relax at the hotel.

DAY 5 On our final day we visit Conwy with its interesting Harbour where the smallest house in Wales can be found and of course its Castle built by Edward 1st. In the mid-afternoon we start our homeward journey via the North Wales coast.

Facilities

- ✓ En-suite accommodation
- ✓ Hospitality tray
- ✓ Television
- ✓ Hairdryer
- ✓ Indoor swimming pool

Holiday Includes

- ✓ Door to door service
- ✓ All coach travel and excursions as listed
- ✓ 4 nights accommodation at the 3* Celtic Royal Hotel
- ✓ 4 x 3 course choice dinners
- ✓ 4 x full breakfasts
- ✓ Included local guided tour of Anglesey
- ✓ Included Welsh Highland Railway journey
- ✓ Services of our experienced crew



Tour Price £399.00
Single Supplement £80.00



Springtime in Lincolnshire

5 DAYS • MONDAY MAY 8TH – 12TH

Staying at the 4* Urban Hotel

Our British springtime tour takes us to Lincolnshire and to the 4* Urban Hotel at Grantham. From here we will tour the Lincolnshire Wolds and countryside and also visit Lincoln itself with its fine Cathedral and shopping centre.

Our Itinerary

DAY 1 Morning departure over the Pennines then South, making a lunch stop at Newark-on-Trent, famous for its Castle. Time will be given here for you to explore the castle and gardens or many heritage attractions of this market town. We will then continue the journey to our hotel in Grantham for a dinner and stay of 4 nights.

DAYS 2, 3 & 4 Morning free in Grantham and then an included afternoon visit to the National Trust's grade 1 property, Belton House. In this beautiful classic English country house (dating back to the 1680s) you can discover fine-looking collections of Silver and porcelain as well as the two storey chapel.

A Full day tour to Lincoln, the county capital, with its magnificent cathedral, Castle and Jew's House (the oldest dwelling house in England).

This morning we take you for a country run over the Lincolnshire Wolds to Woodhall Spa which is famous for its Second World War association with the RAF 617 Squadron known as the 'Dam Busters.'

DAY 5 After a leisurely breakfast we retrace our steps North with a visit enroute.

Facilities

- ✓ En-suite accommodation
- ✓ Hospitality tray
- ✓ Television
- ✓ Hairdryer
- ✓ Leisure club
- ✓ Spa
- ✓ Indoor swimming pool

Holiday Includes

- ✓ Door to door service
- ✓ All coach travel and excursions as listed
- ✓ 4 nights accommodation at the 4* Urban Hotel
- ✓ Tea / coffee on arrival
- ✓ 4 Full breakfasts
- ✓ 4 dinners 3 course choice menu
- ✓ Included visit to Belton House
- ✓ Visit to Lincoln
- ✓ Visit to Woodhall Spa
- ✓ Services of our experienced crew



Tour Price **£345.00**
 Single Supplement £70.00
 Double/twin sole use



Paignton & The English Riviera

5 DAYS • MONDAY MAY 15TH – 19TH

Staying at the 3* Palace Hotel

Our hotel which is situated in a prime location on the seafront, directly adjacent to the town centre and only minutes walk to the beach was former home to the Singer sewing machine family.

Our Itinerary

DAY 1 Morning departure South, stopping enroute for refreshments before continuing our journey to the Palace Hotel, Paignton for dinner and a stay of 4 nights.

DAYS 2,3 & 4 Included half day tour to Brixham, the oldest fishing village in the region.

Included day tour to Totnes, a market town and civil parish at the head of the estuary of the River Dart. After lunch we will make our way to Dartmouth and dependent on the tide, there will be an optional sail on the River Dart.

Morning visit to Buckfast Abbey, world famous for its works of art, bee-keeping, sensory garden and tonic wine. We then travel through to Torquay (the birth place of Agatha Christie) for the rest of the day.

DAY 5 After a leisurely breakfast we depart the hotel and travel North, stopping for morning coffee before returning to our home areas in the late afternoon.

Facilities

- ✓ Ensuite accommodation
- ✓ Hospitality tray
- ✓ Television
- ✓ Hairdryer
- ✓ Luxury spa pool, steam room, sauna
- ✓ Gym
- ✓ The hotel has a lift

Holiday Includes

- ✓ Door to door service
- ✓ All coach travel and excursions as listed
- ✓ 4 nights accommodation at the 3* Palace Hotel
- ✓ 4 dinners, 6 course choice
- ✓ 4 full English breakfasts
- ✓ Included visits to:
 Brixham
 Totnes
 Dartmouth
 Torquay
- ✓ Service of our experienced crew

Tour Price **£369.00**
 Single Supplement £40.00



Ireland - Glens of Antrim, Titanic Exhibition & Hillsborough Castle

5 DAYS • MONDAY MAY 22ND – 26TH

Staying at the 4* Stormont Hotel

A special tour taking in some of the finest scenery in Northern Ireland, the beautiful Glens and coastline of Antrim, the romantic mountains of Mourne and of course the famous Titanic Exhibition.

Our Itinerary

DAY 1 Morning departure North via Gretna following the west coast route to Cairnryan for our afternoon crossing to Belfast. We then drive to the superb 4* Stormont Hotel for dinner and a stay of 4 nights.

Day 2 After a full Irish breakfast we drive to Hillsborough Castle (working Royal Residence) for an included visit with morning scones and tea / coffee. Later we take a circular tour round the mountains of Mourne via Newcastle and Kilkeel.

DAY 3 On today's tour we see the Glens of Antrim and also its coast, passing through Ballycastle, Cushendall and Ballygalley.

DAY 4 Today a local guide will join us at our hotel to take us round the sights of Belfast before our special afternoon visit to the Titanic Exhibition. This attraction is situated at the former Harland & Wolff shipyard where the Titanic was built before it set sail on its maiden voyage on the 15th April 1912. It was the largest man made object of its type in the world and has remained famous to this very day.

DAY 5 After breakfast we depart our hotel for the drive to the Port of Belfast for our morning crossing to Cairnryan before continuing southward to our home areas.



Facilities

- ✓ En-suite accommodation
- ✓ Hospitality tray
- ✓ Hairdryer
- ✓ Television
- ✓ The hotel has a lift

Holiday Includes

- ✓ Door to door service
- ✓ All coach travel and excursions as listed
- ✓ 4 Nights accommodation at the 4* Stormont Hotel
- ✓ 4 Full Irish breakfasts
- ✓ 4 3 course dinners minimum 3 choices
- ✓ Included visit to the Titanic exhibition
- ✓ Included guided tour of Belfast
- ✓ Included day tour to Hillsborough Castle with tea and Scones
- ✓ Services of our experienced crew

Tour Price **£499.00**
 Single Supplement £92.00
 Twin/double Sole Use



Northumberland & Alnwick Gardens

4 DAYS • TUESDAY JUNE 6TH – 9TH

Staying at the 3* White Swan Hotel

Our hotel the 3* White Swan dates back over 300 years and is situated in the heart of the town centre. The Olympic dining room offers an experience of splendour with the original oak panelling, mirrors, ceiling and stained glass windows salvaged from the SS Olympic, sister ship to the Titanic.

Our Itinerary

DAY 1 Our tour to Northumberland takes us to Alnwick, its county town, situated on the River Aln. The town centre displays much character with its cobbled market place, lovely old, well preserved buildings and the warren of narrow alleyways and streets dating back to medieval times.

DAYS 2 & 3 Full day included visit to Alnwick Gardens, just a short walk from the hotel.

Full day tour of the Northumberland Coast, calling at Seahouses, Bamborough and Holy Island (tide permitting).

DAY 4 Our return journey takes us to Otterburn Mill (commissioned by Buckingham Palace to manufacture a small rug for the Royal pram) before continuing South towards Hexham and Carlisle then onward to our home areas.

Facilities

- ✓ En-suite accommodation
- ✓ Hospitality tray
- ✓ Television
- ✓ Hairdryer
- ✓ The hotel does not have a lift although the stairs are easy going and there are limited ground floor rooms

Holiday Includes

- ✓ Door to door service
- ✓ All coach travel and excursions as listed
- ✓ 3 nights accommodation at the 3* White Swan Hotel
- ✓ 3 Dinners, 3 course choice menu
- ✓ 3 full English Breakfasts
- ✓ Included entrance to Alnwick Gardens
- ✓ Included day tour of Northumberland Coast
- ✓ Services of our experienced crew

Tour Price **£359.00**
Single Supplement **£105.00**



Scotland Isle of Arran

5 DAYS • THURSDAY JUNE 15TH – 19TH

Staying at the 3* Kinloch Hotel, Blackwaterfoot

The Isle of Arran, known as Scotland in miniature, has a beautiful coastline with pretty villages and is complimented by rugged mountains to the North and green rolling hills to the South.

Blackwaterfoot, our base, overlooks Drumadoon Bay which attracts many visitors due to the large number of seals that can usually be seen from the promenade.

Our Itinerary

DAY 1 Our first day takes us over the border into Dumfries & Galloway and a leisurely drive through scenic countryside to our hotel, the 4* Hallmark at Irvine.

DAY 2 We depart our hotel and drive to Ardrossan for our crossing to Brodick. We then drive the 'String Road' to the Kinloch Hotel at Blackwaterfoot for dinner and a stay of 3 nights.

DAY 3 Today we tour the Northern part of the Island, making a lunch stop at Lochranza (one of the newest distilleries in Scotland) where there will be time to look around the distillery if you desire. We then return to our hotel by the East side of the Island via Glen Chalmadale and Corrie.

DAY 4 Today we tour the Southern Island with Included visit to Brodick Castle gardens famous for its rhododendrons. We then continue via Lamlash & Whiting bay to the Southern tip of the island at Lagg then around Brownhead to our hotel.

DAY 5 After breakfast we leave our hotel and drive to Brodick for our sail over to the mainland. We then journey through Southern Scotland then south back to our home areas.

Facilities

- ✓ En-suite accommodation
- ✓ Hospitality tray
- ✓ Hairdryer
- ✓ Television
- ✓ Porterage in and out
- ✓ Swimming pool
- ✓ The Kinloch hotel has a lift
- ✓ The Irvine has no lift but ground floor rooms are available

Holiday Includes

- ✓ Door to door service
- ✓ All coach travel and excursions as listed
- ✓ 1 night accommodation at the 4* Irvine Hotel
- ✓ 3 nights accommodation at the 3* Kinloch Hotel
- ✓ 4 dinners 3 course choice menu
- ✓ 4 full breakfasts
- ✓ Tea/coffee & shortbread on arrival
- ✓ Entrance to Brodick castle gardens
- ✓ Light lunch at Lochranza distillery
- ✓ Services of our experienced crew



Tour Price **£399.00**
Single Supplement **£20.00**



Germany - The Mosel Valley

7 DAYS • SUNDAY 25TH JUNE – 1ST JULY

Staying at the 4* Belle Vue Hotel, Boppard

Our first overseas tour of the year takes us to the Mosel valley a truly beautiful area of Germany, where there are hundreds of acres of vineyards sloping down to the river. On this holiday we include a river sail as well as visiting Trier where time will be given to explore the oldest city in Germany situated on the banks on the Mosel river. Our itinerary is as follows.

Our Itinerary

DAY 1 Morning departure to Hull for our overnight crossing to Rotterdam in low berth cabins with facilities, entertainment onboard ship.

DAY 2 On arrival in Rotterdam we drive through Holland and over the border into Germany to the superb Belle Vue hotel Boppard for a stay of four nights, with a welcome drink on arrival.

DAY 3 Situated up stream on the Mosel is Trier the oldest city in Germany still retaining it's Roman influence. Here we have a full day visit with ample time to explore the cities ancient architecture, narrow streets and cafes.

DAY 4 A leisurely half day tour to Koblenz where the Mosel flows into the Rhine at Deutsches Eck corner, this symbolising unity within Germany, or if you prefer, a short walk will take you into the city centre.

DAY 5 Today we have a superb tour over the Hunsruck plateau to the beautiful old town of Berne Kastel, situated in the heart of the Mosel Valley where wine would flow from the fountain to celebrate the harvest season. We then continue through Traben-Trarbach and Zell to Cochem where you can explore the town with its castle high above before driving back to our hotel.

DAY 6 Late morning departure from our hotel through Germany back into Holland with refreshment stops before arriving at Rotterdam for our overnight sailing. Low berth cabins with facilities once again onboard.

DAY 7 On arrival in Hull we clear customs and rejoin our coach for the journey to our home areas arriving early to mid afternoon.



Facilities

- ✓ Ensuite accommodation at the 4* Belle Vue Hotel and onboard ship
- ✓ Porterage when arriving & departing the hotel
- ✓ TV
- ✓ Hairdryer
- ✓ The hotel has a swimming pool & sauna
- ✓ Tea/coffee makers
- ✓ The hotel has a lift

Please note: meals onboard ship are not included the cost for 2 five course dinners & 2 full breakfasts is £52.00 per person (if this is required please state when booking.)

Holiday Includes

- ✓ Door to Door service
- ✓ All coach travel and excursions as listed
- ✓ Return sea crossing Hull/Rotterdam in low berth cabins
- ✓ 4 dinners at the hotel
- ✓ 4 breakfasts at the hotel
- ✓ Welcome drink on arrival
- ✓ Mosel boat sail
- ✓ The currency for this holiday is the euro.
- ✓ A passport & insurance is required.
- ✓ Services of our experienced crew

Please note: a small carry-on overnight bag is useful for onboard the ship

Tour Price **£659.00**
 Single Supplement £99.00
 River View Supp. £32.00 per person



Hampton Court Flower Show & Savil Garden

3 DAYS • FRIDAY JULY 7TH – 9TH

Staying at the 4* Copthorne Hotel near Windsor

An awe inspiring spectacle of colour and perfume will greet you at Hampton Court Henry VIII's former home where the worlds largest flower show is taking place. The Savill Garden which is part of H M the Queen's Windsor Estate is also a place we visit which should give you ideas for your own haven of tranquility albeit on a smaller scale.



© Flickr - Allan Harris

Our Itinerary

DAY 1 After your door to door collection our morning departure will be south stopping en-route for refreshments then on to the Copthorne Hotel Slough for dinner and a stay of 2 nights

DAY 2 After breakfast, a full day tour to Hampton Court with included entrance to the flower show where you can wander and discover at your own pace all the new varieties of plants & gardening accessories. Late afternoon we then return to our hotel for dinner and the evening.

DAY 3 After a leisurely breakfast we leave our hotel and drive the short distance to Savill Garden which is situated on Windsor Great Park. Here we have included entrance to this very popular garden where we will spend time until mid afternoon departure north to our home areas arriving mid evening.



Facilities

- ✓ Ensuite accommodation
- ✓ Gym
- ✓ TV
- ✓ Hairdryer
- ✓ Swimming pool
- ✓ Spa treatments
- ✓ Tea/Coffee makers

Holiday Includes

- ✓ Door to Door service
- ✓ All coach travel and excursions as listed
- ✓ 2 nights accommodation at the 4* Copthorne Hotel
- ✓ 2 buffet dinners
- ✓ 2 full breakfasts
- ✓ Entrance to Hampton Court flower show
- ✓ Entrance to Savill garden
- ✓ Services of our experienced coach crew

Tour Price **£295.00**
Single Supplement £72.00



North Norfolk Coast & Country

5 DAYS • TUESDAY JULY 11TH – 15TH

Staying at the 4* Dunston Hall Hotel Norwich

Norfolk is a diverse county from its coast to its villages, from the flint built cottages of the many attractive villages and the ever changing coastline which is also noted for its wildlife, making this holiday quite special.

Our hotel the Dunstan Hall is an Elizabethan style mansion built in 1859 which stands against 150 acres of stunning wooded Norfolk parkland situated on the outskirts of Norwich.

We also include a visit to Holkham Hall situated near Wells-next-the-Sea on the North coast of Norfolk, a privately owned home to the 8th Earl of Leicester and his family. Its library, statues, paintings and furniture are a major source for academic research. Holkham is a member of the Treasure house group and has allowed galleries and museums throughout the world to display some of its paintings, furniture and manuscripts.



Our Itinerary

- ✓ Full day included visit to Holkham Hall
- ✓ Full day tour of Norfolk coast
- ✓ Half day mystery drive

Facilities

- ✓ Ensuite accommodation
- ✓ Porterage
- ✓ Hospitality tray
- ✓ Television
- ✓ Hairdryer
- ✓ Indoor pool, Sauna, steam room & gym
- ✓ The hotel has a lift

Holiday Includes

- ✓ Door to Door service
- ✓ All coach travel and excursions as listed
- ✓ Tea/coffee on arrival
- ✓ 4 nights at the 4* Dunstan Hall
- ✓ 4 full breakfasts
- ✓ 4 3 course 3 choice dinners
- ✓ Entrance to Holkham Hall
- ✓ Services of our experienced coach crew

Tour Price **£415.00**
Single Supplement £72.00
Twin/double for sole use



Shetland - Lerwick - Yell & Unst

6 DAYS • SUNDAY JULY 23RD – 28TH

Staying at the 3* Queens Hotel Lerwick

With its unique culture, stunning seascapes and abundant wildlife, Shetland is an entrancing blend of Scotland and Norway. Mainland is an incredible place with coastal scenery ranging from charming to dramatic with its capital Lerwick centred around the busy harbour.

Our hotel the Queens, occupies a central position close to the harbour, an ideal base for our stay.

Our Itinerary

Our first day takes us North to Scotland bypassing Perth and on to Aberdeen for our over-night sail to Lerwick. During our sail we have cabins with low berth and included dinner and breakfast. During our stay there will be a free day for you to explore Lerwick, Britain's most northerly capital. We also have a full day tour of Mainland with local guide, including ferry to Yell and Unst. Enroute you will have the opportunity to see the light house at the most northerly point of the British Isles at Muckle Flugga. A further leisure drive will be included to explore more of the island, completing our full tour (possible by road) of the Shetlands.

Our return journey on-board ship is the same as the outward with low bunks and included meals on-board. We arrive back early morning to re-join our coach before heading South through Scotland and over the border back into England and on to our home areas.

ISLE OF UNST The Northernmost island in the British Isles is home to dramatic scenery and immense bird life.

ISLE OF YELL Second largest of the Shetland Islands and during the second World War was the haunt of German submarines. It is now known for its otter population and seabird colonies.



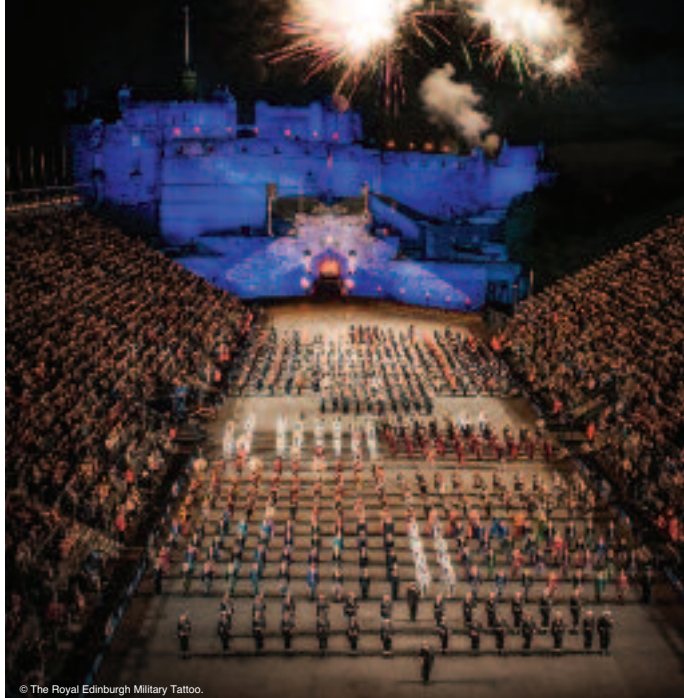
Facilities

- ✓ Ensuite low berth cabin on ship
- ✓ Ensuite accommodation at the hotel
- ✓ TV
- ✓ Hairdryer
- ✓ Hospitality tray
- ✓ The Hotel has NO lift

Holiday Includes

- ✓ Door to Door service
- ✓ All coach travel and excursions as listed
- ✓ 2 nights overnight accommodation onboard ship in cabins with private facilities and side by side beds
- ✓ 3 nights accommodation at the 3* Queen's Hotel
- ✓ 2 dinners & 2 breakfasts onboard ship
- ✓ 3 dinners, 3 course choice menu
- ✓ 3 full breakfasts at the hotel
- ✓ Ferry crossings from Aberdeen to Lerwick
- ✓ Local guide and ferry crossings to Yell & Unst
- ✓ Services of our experienced crew

Tour Price **£899.00**
Single Supplement £180.00



© The Royal Edinburgh Military Tattoo.

Edinburgh Tattoo & Holyrood Palace

3 DAYS • WEDNESDAY AUGUST 9TH – 11TH

Staying at the 3* Best Western King's Manor Hotel

Scotland's capital city has been the home of the Tattoo since 1949, the first performances being held at Princess Street Gardens. Today the awe inspiring variety and colour is held on the Castle Esplanade where people from all over the world come to visit each year. Our included tickets are for the Thursday night performance.

On Friday morning we have an included visit to the Palace of Holyroodhouse commonly referred to as 'Holyrood Palace'. The palace, founded as a monastery in 1128 is the official residence of the Monarchy in Scotland and has a close association with Scotland's history.

Our holiday is based at the 3* Best Western King's Manor Hotel which is situated outside of the city centre. On arrival in Edinburgh we include a city tour before continuing to the hotel for dinner and a stay of two nights.



© The Royal Edinburgh Military Tattoo.



Facilities

- ✓ Ensuite accommodation
- ✓ Porterage
- ✓ Hospitality tray
- ✓ TV
- ✓ Hairdryer
- ✓ Indoor pool
- ✓ The hotel has a lift

Holiday Includes

- ✓ Door to Door service
- ✓ All coach travel and excursions as listed
- ✓ 2 nights at the 3* Best Western King's Manor hotel
- ✓ 2 dinners 3 course 3 choice
- ✓ 2 full Scottish breakfasts
- ✓ Entrance to the tattoo performance
- ✓ Entrance to Holyrood Palace
- ✓ Services of our experienced coach crew

Tour Price **£355.00**
Single Supplement £70.00



Edinburgh City & Festival

3 DAYS • WEDNESDAY AUGUST 9TH – 11TH

Staying at the 3* Best Western King's Manor Hotel

Whether it's shopping, sightseeing, visiting the Castle or Holyrood Palace, Edinburgh City has it all. The capital city comes alive particularly in August when 'The Fringe' takes place. The Royal Mile is where you will find entertainment of all kinds for everyone with budding entrepreneurs hoping to make a future name for themselves. The atmosphere is definitely special, with over 100 venues available to visit. For something different you may want to walk through the city's gardens or shop on Princess Street, the choice is yours. On arrival in Edinburgh we have included a city tour before arriving at our 3* hotel, the Best Western King's Manor for dinner and a stay of two nights. The hotel being situated in the Portobello area of Edinburgh.

On Thursday after breakfast we transfer you to the city and return to the hotel in the late afternoon for evening dinner.

On Friday morning we have an optional visit to the Palace of Holyroodhouse or you can be taken into the city until our afternoon departure.



Facilities

- ✓ Ensuite accommodation
- ✓ Porterage
- ✓ Hospitality tray
- ✓ TV
- ✓ Hairdryer
- ✓ Indoor pool
- ✓ The hotel has a lift

Holiday Includes

- ✓ Door to Door service
- ✓ All coach travel and excursions as listed
- ✓ 2 nights at the 3* Best Western King's Manor hotel
- ✓ 2 dinners 3 course 3 choice
- ✓ 2 full Scottish breakfasts
- ✓ Optional entrance to Holyrood Palace
- ✓ Services of our experienced coach crew

Tour Price **£295.00**
Single Supplement £70.00



City of London Buckingham Palace & Windsor

4 DAYS • MONDAY AUGUST 14TH – 17TH

Staying at the 3* St. Giles Hotel

Our hotel is ideally situated in the centre of London, close to Oxford street, the British Museum and theatre land. The hotel offers ensuite accommodation and full English breakfast.

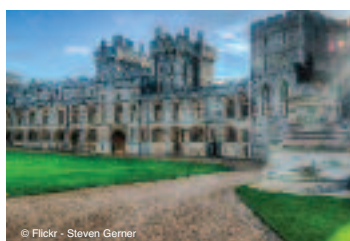
Our Itinerary

DAY 1 Morning departure south stopping enroute for refreshment before arriving in London where we include a city tour before making our way to the hotel for a stay of 3 nights.

DAY 2 A morning included visit to Buckingham Palace, London home of the Queen. The rest of the day is free for you to explore the sights or shopping that Central London has to offer.

DAY 3 Full free day in London for you to visit some of the many attractions that London offers including, Clarence house, the London Eye, Tower Bridge, The Shard or maybe even take a sightseeing cruise down the Thames.

DAY 4 after a leisurely breakfast we leave our hotel for a drive to Windsor where time will be given to visit the Castle, Eton or sail on the Thames. We will then make our way North to our home areas, arriving mid-evening.



© Flickr - Steven Gerner



Facilities

- ✓ Ensuite accommodation
- ✓ Hospitality tray
- ✓ TV
- ✓ The hotel has a lift

Holiday Includes

- ✓ Door to Door service
- ✓ All coach travel and excursions as listed
- ✓ 3 nights at the 3* St. Giles Hotel
- ✓ Included London city tour
- ✓ Entrance to Buckingham Palace
- ✓ 3 full English Breakfast
- ✓ Visit to Windsor
- ✓ Services of our experienced coach crew

Tour Price **£325.00**
Single Supplement **£80.00**



Cheltenham & The Cotswolds

5 DAYS • SUNDAY AUGUST 20TH – 24TH

Staying at the 4* Cheltenham Chase Hotel

The Cotswolds cover an area of 790 square miles in the upper part of the southwest region of England and is the country's largest officially designated Area of Outstanding Natural Beauty, popular with both English and international visitors. The area is well known for gentle hillsides (Wolds), outstanding countryside with river valleys, water meadows and beech woods, sleepy ancient Cotswold stone villages, historic market towns and for being so typically English where time has stood still for over 300 years.

Cheltenham located on the edge of the Cotswolds as been a health and holiday resort since 1716 when the spa waters were discovered. Said to be the most complete regency town in England.

Our Itinerary

DAY 1 morning departure travelling South making refreshment stops enroute to the Cheltenham Chase hotel for dinner and a stay of four nights.

DAYS 2/3/4 Free time in Cheltenham Full day tour to Broadway & Chipping Campden via Winchcombe Edge.

Full day visiting the typical Cotswold villages of Bourton on the Water, Stow on the Wold & Burford.

DAY 5 After breakfast we depart the hotel heading north making refreshment stops enroute to our home areas arriving early evening.



Facilities

- ✓ Ensuite accommodation
- ✓ Hospitality tray
- ✓ TV
- ✓ Hairdryer
- ✓ Porterage
- ✓ Indoor pool, gym
- ✓ Trouser press
- ✓ Safe and fridge
- ✓ The hotel does have a lift

Holiday Includes

- ✓ Door to Door service
- ✓ All coach travel and excursions as listed
- ✓ 4 nights accommodation at the 4* Cheltenham Chase hotel
- ✓ Tea/coffee on arrival
- ✓ 4 dinners 3 course choice menu
- ✓ 4 English breakfasts
- ✓ Services of our experienced coach crew

Tour Price **£395.00**
Single Supplement **£105.00**



Lake Garda & The Dolomites

10 DAYS • TUESDAY AUGUST 29TH – SEPTEMBER 7TH

Staying at the 4* Europa hotel.

Our tour to Italy takes us to the most famous of all and probably the most beautiful lake in Italy. It is situated in the north of the country with stunning scenery, surrounded by mountains and pretty villages. To the south the villages cling to the lakeside offering Italian old world charm.

The 4* Europa hotel is situated in Riva Del Garda at the top Lake Garda, a bustling Italian town with narrow winding streets and the dramatic backdrop of the Dolomite mountains.

Our Itinerary

DAY 1 Morning departure crossing the Pennines making refreshment stops enroute to the City of York with time for sightseeing or relaxation before we continue to Hull and our ship for our overnight crossing to Rotterdam, with outside cabins, side by side berths and entertainment onboard.

DAY 2 After breakfast we clear customs and leave Rotterdam driving through Holland and over the border into Germany with refreshment stops enroute. Travelling south through Germany we arrive at our hotel for dinner and overnight stay.

DAY 3 After breakfast, our early start takes us via the motorway network of Germany, crossing the border into Austria then over the Fern pass along the Inn Valley. We then pass Innsbruck and drive over the Brenner Pass, joining the Autostrada, passing Vipiteno and Bolzano then on to Riva Del Garda and the Europa hotel for dinner and a stay of five nights.

DAYS 4/5/6/7 Free time in Riva to explore this premium resort or maybe a sail to Limone or Malcesine which we can arrange

Full day spectacular Dolomites tour, taking in some of the most magnificent mountain scenery in Europe

Full day to Verona, the famous Italian city with it's large amphitheatre and balcony of Romeo and Juliet

A further day tour taking in some of Lake Garda's pretty Lakeside villages

DAY 8 After breakfast we drive to Vipiteno, where you can purchase duty paid goods. We then continue with a stop to view the Europa Brook bridge before driving through Germany to our overnight hotel.

DAY 9 Today's journey takes us through Germany and Holland to Rotterdam and our return sail to Hull again with outside cabins and side by side berths, entertainment on board.

DAY 10 After clearing customs we rejoin our coach and drive back to our home areas arriving early afternoon.

Facilities

- ✓ Ensuite accommodation
- ✓ Hospitality tray
- ✓ TV
- ✓ Indoor pool
- ✓ The currency in Europe is the Euro, a passport, EHC card and adequate travel insurance are needed for this holiday
- ✓ The hotel does have a lift

Holiday Includes

- ✓ Door to door service
- ✓ All coach travel and excursions as listed
- ✓ 5 nights accommodation at the 4* Europa hotel
- ✓ 2 overnights (1 each way) to Italy
- ✓ Out & return ensuite cabin with low berths onboard ship
- ✓ 5 three course dinners
- ✓ 7 continental breakfasts
- ✓ Welcome drink at the Europa
- ✓ 1 Gala dinner
- ✓ 1 Trentino dinner
- ✓ Meals onboard ship are not included 2 full breakfasts and 2 dinners are £52.00 per person, please request when booking
- ✓ Services of experienced coach crew

Tour Price **£915.00**
Single Supplement £155.00



Isle of Wight - Sandown

7 DAYS • SUNDAY SEPTEMBER 10TH – 16TH

Staying at the Ocean Hotel Sandown

The Isle of Wight is England's largest Island, separated from the mainland by the Solent. It has something for everyone from glorious sandy beaches and quaint villages to Royal Residences.

Our Itinerary

DAY 1 Morning departure via the motorway system, making refreshment stops enroute and on to the port of Southampton for our crossing of the Solent to Cowes.

DAYS 2/3/4/5/6 Two full day tours of the island, travelling through Shanklin, Brightwater, Alum Bay, Yarmouth, Cowes and Ryde

Half day tour to the picture postcard village of Godshell,

An optional visit to Queen Victoria's residence of Osborne House

DAY 7 After breakfast we depart the hotel for the return drive to Cowes & our return crossing to Southampton. Continuing north with refreshment stops enroute to our home areas.



Facilities

- ✓ Ensuite accommodation
- ✓ Hospitality tray
- ✓ TV
- ✓ Porterage
- ✓ Outdoor Pool
- ✓ Table tennis
- ✓ Snooker
- ✓ The hotel does have a lift but some rooms are reached via stairs

Holiday Includes

- ✓ Door to Door service
- ✓ All coach travel and excursions as listed
- ✓ 6 nights accommodation at the Ocean hotel
- ✓ 6 dinners 3 course choice menu
- ✓ 6 English breakfasts
- ✓ Entertainment each night
- ✓ Optional day tour to Osborne House
- ✓ Outward & return crossing from Southampton-Cowes
- ✓ Services of experienced coach crew



Tour Price **£549.00**
 Single Supplement £Nil (few only)
 Sea View Supplement £35.00 per person



Southern Ireland - Killarney & The Ring of Kerry

7 DAYS • THURSDAY SEPTEMBER 21ST – 27TH

Staying at the 4* Killarney Towers hotel

The South West of Ireland offers superb coastal scenery where Killarney a popular tourist destination has traditional Irish public houses where the Craic can be enjoyed. Our crossing to Ireland is from Holyhead to Dublin.

Our Itinerary

DAY 1 Morning departure travelling South and West to the port of Holyhead where we board the ship bound for Dublin. On arrival in Ireland we clear customs and drive the short distance to Bray and the Esplanade hotel for dinner and our overnight stay.

DAY 2 Departing Bray we make our way through Ireland calling at Adare before continuing to Killarney and the Killarney Towers hotel for a stay of four nights.

DAYS 3/4/5 Full day tour of the Ring of Kerry

Full day tour of the Dingle Peninsular

Free time in Killarney

Optional Jaunting car, Lake sail & visit to Muckross House.

DAY 6 Departing Killarney we drive to Blarney with time if you choose to visit the castle & Blarney stone before departing for Carlow and the Seven Oaks hotel for dinner and over-night stay.

DAY 7 We depart Carlow making our way to Dublin for the return sail to Holyhead & on to our home areas.



Facilities

- ✓ Ensuite accommodation
- ✓ Hospitality tray in most hotels
- ✓ TV
- ✓ All hotels have lifts some rooms may have steps also
- ✓ Photographic identification and adequate insurance is required for this holiday.
- ✓ The currency in Southern Ireland is the Euro

Holiday Includes

- ✓ Door to door service
- ✓ All coach travel and excursions as listed
- ✓ 4 nights accommodation at the 4* Killarney Towers hotel
- ✓ 1 night at the 3* Esplanade hotel Bray
- ✓ 1 night at the 4* Seven Oaks hotel Carlow
- ✓ 6 dinners 3 course choice menu
- ✓ 6 full breakfasts
- ✓ Outward & return crossings Holyhead - Dublin
- ✓ Services of experienced coach crew

Tour Price **£589.00**
 Single Supplement £123.00
 Twin/double for sole use



Cornwall & The Eden Project

5 DAYS • MONDAY OCTOBER 2ND-6TH

Staying at the 3* Esplanade Hotel Fistral Bay

Fistral Bay is situated to the south of Newquay with a stunning coastline. The area is a centre for surfboarding with the impressive waves rolling in from the ocean.

Our Itinerary

DAY 1 Our journey South is via the M6 and M5 motorways stopping enroute for refreshments, bypassing Bristol and Exeter then via Okehampton and Launceston, over Bodmin Moor to our hotel situated on Fistral Bay for dinner and a stay of four nights.

DAYS 2/3/4

Full day tour to Falmouth & Truro

Full day included tour to the Eden Project, a unique look at the interaction of humans and plants, a visitor attraction created in a redundant China clay quarry

Free day, or join our optional excursion to the Lost gardens of Heligan and Mevagissey a small Cornish Harbour.

DAY 5 After breakfast we depart our hotel and travel north to our home areas with refreshment stops enroute.



Facilities

- ✓ Ensuite accommodation
- ✓ TV
- ✓ Hospitality tray
- ✓ Porterage
- ✓ Indoor pool
- ✓ The hotel does have a lift

Holiday Includes

- ✓ Door to door service
- ✓ All coach travel and excursions as listed
- ✓ 4 nights accommodation at the 3* Esplanade Hotel, Fistral Bay
- ✓ Tea/coffee on arrival
- ✓ Services of experienced coach crew
- ✓ 4 dinners 3 course choice menu
- ✓ 4 English breakfasts
- ✓ Entrance to The Eden project



Tour Price **£389.00**
Single Supplement £Nil - few only



Germany - Boppard & Rhine Ablaze

6 DAYS • THURSDAY OCTOBER 12TH – 17TH

Staying at the 4* Belle Vue hotel

A holiday to Boppard situated at the most beautiful point on the river Rhine. Castles, Cathedrals, woods & vineyards and a romantic river all contribute to the scenery.

Our visit coincides with the grape harvest celebrations and includes an evening cruising the Rhine with dinner and entertainment onboard. Our hotel is the 4 star Belle Vue situated on the Rhinestrasse overlooking the Rhine, in our opinion the best in Boppard.

Our Itinerary

DAY 1 A leisurely start making our way over the Pennines with refreshment stop enroute to the city of York. Time will be allowed for sightseeing or shopping. Arriving in Hull we join our ship for the crossing to Rotterdam, all cabins ensuite with low berths.

DAY 2 After breakfast and clearing customs we rejoin our coach for the journey through Holland and Germany to Boppard and a stay of three nights.

DAYS 3/4 Morning tour to Koblenz the meeting point of the Rhine and Mosel rivers with the afternoon free to explore Boppard or relax before our evening cruise with dinner and entertainment included while we view the bonfires and fireworks setting the "Rhine Ablaze".

Day tour to Rhudesheim with time to take the cable car to the Neiderwald monument if you choose. Time permitting we will also visit St Goar on the Rhine famous for it's large cuckoo clock.

DAY 5 Early afternoon departure from Boppard to Rotterdam and our ship for the return sailing to Hull. Again cabins with facilities and low berths.

DAY 6 After clearing customs we again rejoin our coach crossing the Pennines to our home areas. Arriving early afternoon.

Facilities

- ✓ Ensuite accommodation
- ✓ TV
- ✓ Swimming Pool
- ✓ The hotel does have a lift

The currency in Europe is the Euro, a passport, EHIC card and adequate travel insurance are needed for this holiday

Holiday Includes

- ✓ Door to door service
- ✓ All coach travel and excursions as listed
- ✓ 3 nights accommodation at the 4* Belle Vue
- ✓ Return crossing Hull Rotterdam
- ✓ En-suite cabins with low berths
- ✓ Welcome drink
- ✓ 4 hr boat cruise with dinner onboard
- ✓ 2 dinners at the hotel
- ✓ 3 breakfasts
- ✓ Services of experienced coach crew

NB Meals onboard ship are not included 2 full cooked breakfasts and 2 five course dinners are £52.00 per person, please request when booking

Tour Price **£585.00**
Single Supplement £87.00





Scotland - Inverness Inclusive at the Palace

5 DAYS • SUNDAY OCTOBER 22ND – 26TH

Staying at the 3* Best Western Palace Hotel

An 'all inclusive holiday' at our hotel in Inverness, the capital of the highlands is our destination.

The Best Western Palace enjoys a commanding position on the banks of the river Ness ideally placed for walking, shopping or sightseeing.

Our Itinerary

DAY 1 Morning departure over the border into Scotland with refreshment stops, by-passing Stirling, Perth & Pitlochry to the 3* Palace Hotel Inverness, for a stay of four nights.

DAYS 2/3/4 Full day tour of the Gairloch Mountains

A Day tour via Lairg to the Shin Falls

Free day to explore Inverness or an

Optional half day to the Black Isle

DAY 5 After breakfast we depart our hotel and travel the main route south to our home areas arriving late afternoon/early evening.



Facilities

- ✓ Ensuite accommodation
- ✓ Hospitality tray
- ✓ TV
- ✓ Hairdryer
- ✓ Swimming pool
- ✓ Fitness centre
- ✓ The hotel does have a lift

Holiday Includes

- ✓ Door to door service
- ✓ All coach travel and excursions as listed
- ✓ 4 nights accommodation at the 3* Best Western Palace hotel
- ✓ 4 dinners 3 course choice menu
- ✓ 4 breakfasts
- ✓ 3 Light lunches
- ✓ Afternoon scones
- ✓ Full entertainment programme
- ✓ Free evening bar
- ✓ Services of experienced coach crew

Tour Price **£395.00**
Single Supplement £80.00



Loch Lomond - Turkey & Tinsel

Inclusive at the Winnock

5 DAYS • MONDAY NOVEMBER 20TH-24TH

Staying at the 3* Winnock Arms Hotel

The privately owned Winnock Arms is a cottage type hotel situated in Drymen, a small picturesque village close to the East Bank of Loch Lomond.

Our stay includes light lunches, an evening free bar along with festive entertainment.

Our Itinerary

DAY 1 Morning departure north with refreshment stop en-route to the Winnock Hotel at Drymen for a stay of four nights.

DAYS 2/3/4 A short tour to Balmaha on the East side of Loch Lomond

A full day tour via Loch Lomond shores to Inverary and return.

A full day tour of the Trossachs to Callander

(N.B. these tours will operate weather permitting)

DAY 5 After a leisurely breakfast we travel south with refreshment stops en route to our home areas.



Facilities

- ✓ Ensuite accommodation
- ✓ Hospitality tray
- ✓ TV
- ✓ The hotel does NOT have a lift

Holiday Includes

- ✓ Door to door service
- ✓ All coach travel as listed
- ✓ 4 nights accommodation at the 3* Winnock Arms Hotel
- ✓ 4 dinners 3 course choice menu
- ✓ 4 breakfasts
- ✓ 3 Light lunches
- ✓ Full entertainment programme
- ✓ Free evening bar
- ✓ Services of experienced coach crew



Tour Price **£385.00**
Single Supplement £56.00



Thursford Christmas Spectacular

4 DAYS • WEDNESDAY NOVEMBER 29TH-DECEMBER 2ND

Staying at the 4* Mercure Hotel Norwich

The Thursford Spectacular provides the ultimate Christmas musical experience, staging a blend of Christmas entertainment, songs, carols, dazzling dancers and beautiful costumes. Each show is a pageant of spectacle and colour with a cast of over one hundred performers.

Our Itinerary

DAY 1 Morning departure stopping en-route for refreshments to Norwich and the Mercure hotel for a stay of 3 nights.

DAYS 2 & 3 Visit to Norwich centre and Wroxham Barns

Matinee performance of the Thursford Spectacular, with included tickets.

DAY 4 After breakfast our return journey will take us to Kings Lynn and the Caithness Crystal centre for Christmas shopping & refreshments. We continue north stopping for lunch arriving our home areas late afternoon.



Facilities

- ✓ Ensuite accommodation
- ✓ Hospitality Tray
- ✓ Television
- ✓ Hairdryer
- ✓ Portage
- ✓ The hotel does NOT have a lift

Holiday Includes

- ✓ Door to door service
- ✓ All coach travel and excursions as listed
- ✓ 3 nights accommodation at the 4* Mercure Norwich hotel
- ✓ 3 dinners 3 course choice menu
- ✓ 3 full breakfasts
- ✓ Entrance to the Thursford Spectacular
- ✓ Visit to Norwich & Wroxham Barns
- ✓ Services of experienced coach crew



Tour Price **£389.00**
Single Supplement £70.00



Durham Christmas Market

4 DAYS • THURSDAY NOVEMBER 30TH – DECEMBER 3RD

Staying at the 4* Marriott Royal County Hotel Durham

The Ancient city of Durham with its imposing Cathedral & castle the old market hall and square create an ideal setting for the annual Christmas market. The superb position of our hotel allows easy walking to the market and city.

Our Itinerary

DAY 1 Morning departure over the Pennines with a lunch stop at Ripon and maybe a little shopping. We then join the Great North Rd and drive North to our destination in Durham the Marriott hotel for dinner and a stay of 3 nights.

DAYS 2 & 3 In Durham to absorb the atmosphere of the Christmas market which is held on and around the square in the centre of the city.

We have made this holiday extremely leisurely with lots of time to visit the castle and cathedral or if you prefer, a leisurely walk alongside the river Wear in stark contrast to the bustle of the market place.

DAY 4 After breakfast we leave our hotel for a leisurely drive to Barnard Castle where time will be given to explore the town, with its impressive castle & butter market. We then continue our journey to our home areas arriving late afternoon.

Facilities

- ✓ Ensuite accommodation
- ✓ Hospitality tray
- ✓ TV
- ✓ Hairdryer
- ✓ Safe
- ✓ Iron/ironing board
- ✓ The hotel does have a lift

Holiday Includes

- ✓ Door to door service
- ✓ All coach travel and excursions as listed
- ✓ 3 nights accommodation at the Marriot 4* Royal County Hotel
- ✓ 3 dinners three course choice menu
- ✓ 3 English breakfasts
- ✓ Services of experienced coach crew

Tour Price **£325.00**
 Single Supplement **£75.00**
 Double/twin for sole use

London - Oxford Street Lights & Shopping

2 DAYS • SUNDAY DECEMBER 17TH – 18TH

Staying at the 3* St Giles Hotel central London

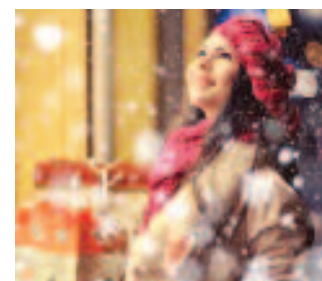
A short festive break to see the bright lights of London at Christmas time. The St Giles hotel is situated a short walk from Oxford Street, the British Museum & Tottenham Court rail station.

Oxford Street lights were originally turned on in 1959 and along with Regent Street's display have become world famous.

Our Itinerary

DAY 1 Morning departure to London & the St Giles hotel with time to explore London, visit a museum, theatre, or perhaps the shops. An evening visit to Oxford Street is a must at this time of year.

DAY 2 After English breakfast we join our coach for the short journey to Covent Garden with time allowed to visit this popular area, where at times street entertainers perform. We will also make a visit to the South Bank of the River Thames, home to the London Eye, London Aquarium & Florence Nightingale museum, where at times you will see street performers along the side of the river. Late afternoon we depart London and journey north arriving mid/late evening.



Facilities

- ✓ Ensuite accommodation
- ✓ Hospitality tray
- ✓ TV
- ✓ The hotel Has a lift

Holiday Includes

- ✓ Door to door service
- ✓ All coach travel and excursions as listed
- ✓ Overnight accommodation at the 3* St Giles Hotel with English Breakfast
- ✓ Services of experienced coach crew

Tour Price **£119.00**
 Single Supplement **£27.00**



New Year Celebrations at Shrigley Hall

4 DAYS • SATURDAY DECEMBER 30TH – JANUARY 2ND

Staying at the 4* Shrigley Hall Hotel

The Shrigley Hall hotel situated on the edge of the Peak District is a sister hotel to the Redworth Hall (where we have spent our previous New Year celebrations). This four star hotel is surrounded by stunning scenery with its own golf course, and is our base for the New Year celebrations to see in 2018.

Our Itinerary

DEC 30TH A leisurely drive through the Peak District to the Shrigley Hall hotel whereon arrival tea & coffee will be served while your cases are taken to your rooms. Time to relax or perhaps visit the hotels health club and spa before dinner this evening which will be three course, three choice menu.

DEC 31ST A full breakfast followed by a leisurely coach tour through the Derbyshire Dales, then returning for lunch at the hotel. Time in the afternoon to relax before the highlight of a New Year holiday the Gala dinner and midnight celebration.

JAN 1ST HAPPY NEW YEAR a hearty breakfast awaits with relaxation prior to lunch. In house entertainment during the afternoon. Dinner & relaxing entertainment during the evening.

JAN 2ND Morning departure from the hotel with a mystery visit before returning to our home areas..

Facilities

- ✓ Ensuite accommodation
- ✓ Hospitality tray
- ✓ TV
- ✓ Health club with swimming pool
- ✓ Spa, beauty room and nail bar
- ✓ Golf course

Holiday Includes

- ✓ Door to door service
- ✓ All coach travel and excursions as listed
- ✓ 3 nights accommodation at the 4* Shrigley Hall Hotel
- ✓ Drinks reception
- ✓ 2 dinners three course choice menu
- ✓ 1 four course Gala dinner
- ✓ 2 lunches
- ✓ 3 English breakfasts
- ✓ Full entertainment programme
- ✓ Services of experienced coach crew

NB The hotel will finalise their itinerary January 2017 because of this the above information is subject to change.

Tour Price **£399.00**
Single Supplement £75.00



Exclusive Door-to-Door Coach Touring

OBERAMMERGAU 2020

Every 10 years the Bavarian village of Oberammergau holds a very special Passion Play which is performed by the people of the village. It has become world famous and will be the fourth time we have operated this holiday which includes tickets for the performance. It will be a 10 days 2 centre holiday, the first part staying in or around Oberammergau and the second part either in Austria or the Black forest. Deposits for this holiday will be required in 2018 (possibly before). If anyone is interested would they please let us know



BOOKING DETAILS

Tour Destination	
Departure Date	
Pick Up Location	
Special Requests (these are not guaranteed)	
Name	
Address	
Telephone	Postcode
Name	
Address	
Telephone	Postcode
	£40.00 Deposits (non refundable) / £60.00 Overseas Holidays
Total Enclosed	

I have read & understood the booking terms & conditions and accept them for myself and all others named above.

Signature	
Date	

Please note: British law states you must have insurance cover when outside of the U.K. If this holiday is not in the U.K. then please state the name of your insurers.



Brethertons Gold Line Holidays Ltd, Beacon Croft, Thornley with Wheatley, Longridge, PR3 2NB

DIRECT BOOKING TELEPHONE 01772 783795

BOOKING CONDITIONS

1/ Booking Confirmation

A deposit of £40.00 UK or £60.00 overseas per person (WHICH IS NON REFUNDABLE) secures your hotel room & seat allocation. A confirmation invoice will be forwarded to you and a contract will then exist between us.

2/ Balance of Payment

The balance of the holiday must be paid not later than 8 weeks before the holiday departure date. If you book within this 8 week period you must pay the full holiday cost at the time of booking. If the balance is not paid in time we reserve the right to cancel your booking and retain your deposit.

3/ Cancellation By You

You may cancel your holiday at any time providing the cancellation is made in writing. Such cancellations will incur the charges shown below, although you may be able to reclaim these charges if the reason for cancellation is covered under the terms of your holiday insurance. It is always advisable to insure your holiday.

- A)** Holiday cancellation charge made to you
- Prior to 56 days before departure date – deposit only
 - 42-56 days before departure – 30% holiday cost
 - 28-42 days before departure – 60% holiday cost
 - 1-27 days before departure – 100% holiday cost

4/ Cancellation By Us

In certain circumstances we may have to cancel your holiday. Should this occur we will normally not give you less than 21 days notice and will of course offer you a prompt & full refund of all monies paid to us (there will be no further compensation payable).

5/ Liability

- A)** We cannot accept liability for holidays affected by: War or threat of war, civil strife, Industrial action, natural disaster, weather, governmental action or other similar events beyond our control, and therefore reserve the right to alter any tour or excursion due to unforeseen circumstances.
- B)** All hotels are chosen by us with great care but as they are neither owned by us or under our direct control we are unable to accept responsibility for the actions or omissions of their personnel.
- C)** It is your responsibility to make sure that you are at the correct departure point at the correct time and we cannot be liable for any loss or expense incurred if you are not.
- D)** The coaches we operate are designed for long distance touring, equipped with reclining seats etc.; however we reserve the right to alter this type of vehicle should the need occur due to unforeseen circumstances.
- E)** Passengers must not smoke while onboard our vehicles.
- F)** Luggage labels & final pick up times will be issued approx 7 days before departure along with your balance payment receipt.

G) This brochure was produced October 2016 and we have offered the best value for money rate possible. Although it is not our policy to have surcharges (increases of taxes on fuel, currency exchange, the VAT rate, or introduction of VAT on present zero rated items) will be taken into account and unfortunately passed on to our clients irrespective of the clients date of booking. Should an increase be necessary we will issue our agents with a revised price list or a copy will be available at our office.

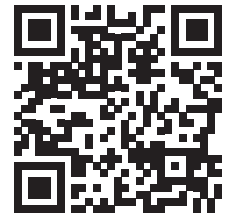
H) The company takes no responsibility for passengers' goods or possessions left onboard the coach. It is up to the individual to ensure their goods are safe & secure. Valuables should be carried by the passengers at all times or deposited in a hotel security box and a receipt obtained.

For further information please contact our office.

Brethertons Gold Line Holidays

Beacon Croft,
Thornley with Wheatley,
Longridge, PR3 2NB

Telephone: **(01772) 783795**



Or our Agents

Bay Travel, 35 Euston Road, Morecambe
(01524) 422444

Clitheroe T.I.C., Platform Gallery Station, Clitheroe
(01200) 425566

Garstang T.I.C., 1 Cherestanc Square, Park Hill Road, Garstang
(01995) 602125

Garstang Travel Centre, Market Place, Garstang
(01995) 606393

Global Travel, Station Road, Bamber Bridge
(01772) 311863

Gullivers Travels, 151 Liverpool Road, Longton
(01772) 612656

Mike Stuart Travel, St Davids House, St Davids Rd South, St Annes
(01253 711934)

Preston Travel Centre, 478 Blackpool Road, Ashton on Ribble
(01772) 729476

Travel Circle, 54 Derby Road, Longridge
(01772) 786777

Please note our office opening hours

Monday – Friday 9.00am until 5.00pm
Saturday 9.00am until 12.30pm
Sunday Closed

Outside off these hours we offer emergency cover only.

GROUP HOLIDAYS

Let us organise a holiday for your group

We can offer a wealth of experience to cover any special interests your group may have, from stately homes & gardens, shows, museums, crafts, train or boat journeys, the Dutch bulbfields perhaps, or if you wish we can collect your group from anywhere in Great Britain to tour the Ribble Valley, visit the vibrant cities of Liverpool, Manchester, Preston or Lancaster, the scenic Lake District & Yorkshire Dales. We offer a full service from the organising of hotels, providing quality coaches with uniformed crew, a holiday leaflet to hand to your

members with full holiday details, we will also book the visits & attractions, infact once we have agreed and confirmed the details with yourself you can relax and leave the rest to us. We also offer the same attention to detail for day excursions. Please ring our office for a list of ideas for group visits.

Our fully air conditioned coaches offer spacious leg room with reclining and lateral seat movement and are presented to the finest standard.



Uniformed crew accompany every holiday offering assistance and information as required.

Please note our office opening hours
Monday – Friday 9.00am until 5.00pm
Saturday 9.00am until 12.30pm

Email admin@brethertonsgoldline.co.uk
www.brethertonsgoldline.co.uk

**For all private holidays,
overnight hotels, group visits
or detailed itinerary
programmes call our office at:**

Beacon Croft, Thornley with Wheatley, Longridge,
Lancashire PR3 2NB

01772 783795

Bretherton's

GOLD LINE HOLIDAYS
Experience the ultimate

Bretherton Gold Line Holidays Ltd
Beacon Croft
Thornley with Wheatley
Longridge PR3 2NB



Exclusive door to door holidays by coach